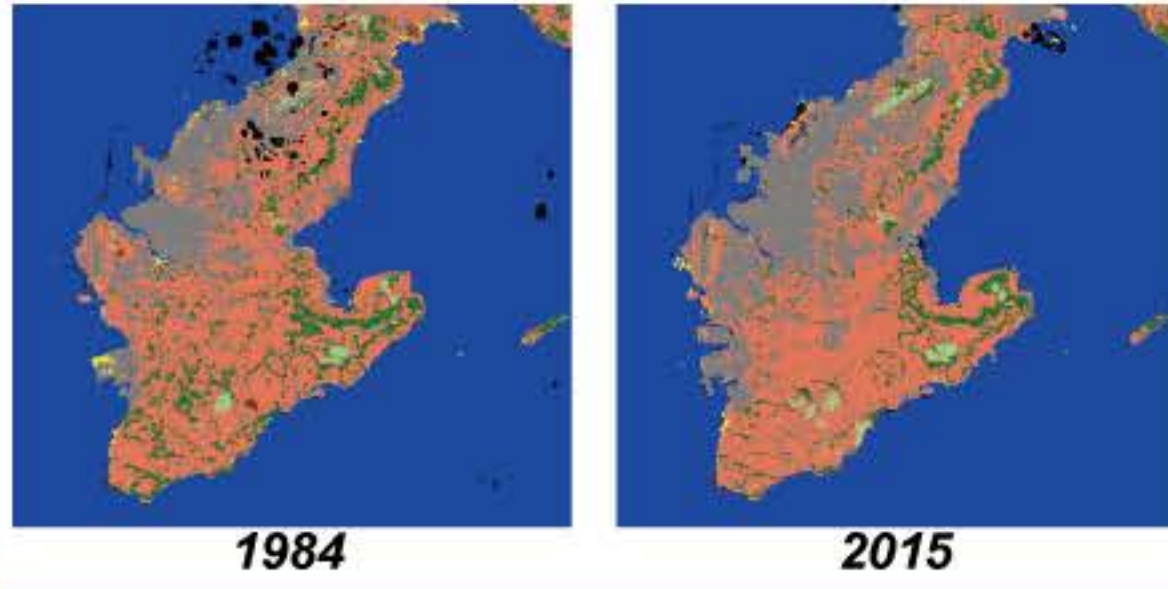


OKEON Chura-mori Project: a new environmental monitoring project in Okinawa, Japan



Geographic Information Systems

Payal Shah (OIST) and Kenneth Dudley (OIST) have been reconstructing land-use and land-cover change over the last 40 years in Okinawa with over 27 data layers.



Masashi Yoshimura "YOSHI"
(myoshimura@ant-database.org),
Takuma Yoshida, Masako Ogasawara
& Evan Economo

Okinawa Institute of Science and Technology
Graduate University (OIST), Japan

OKEON 美ら森プロジェクト

Okinawa Environmental
Observation Network

Chura-mori Project - "Chura-mori" means "Beautiful forest" in Okinawan dialect

OKEON is a network to monitor the terrestrial environment of Okinawa, involving researchers at OIST, collaborators at various institutions, high schools and museums across Okinawa, and the local community. We set the two major goals below through this project.

+To establish an observation network to measure, monitor, and understand the terrestrial environment of Okinawa.

+To develop a sustainable network for environmental education in Okinawan society under the collaboration between scientists and the people of Okinawa.

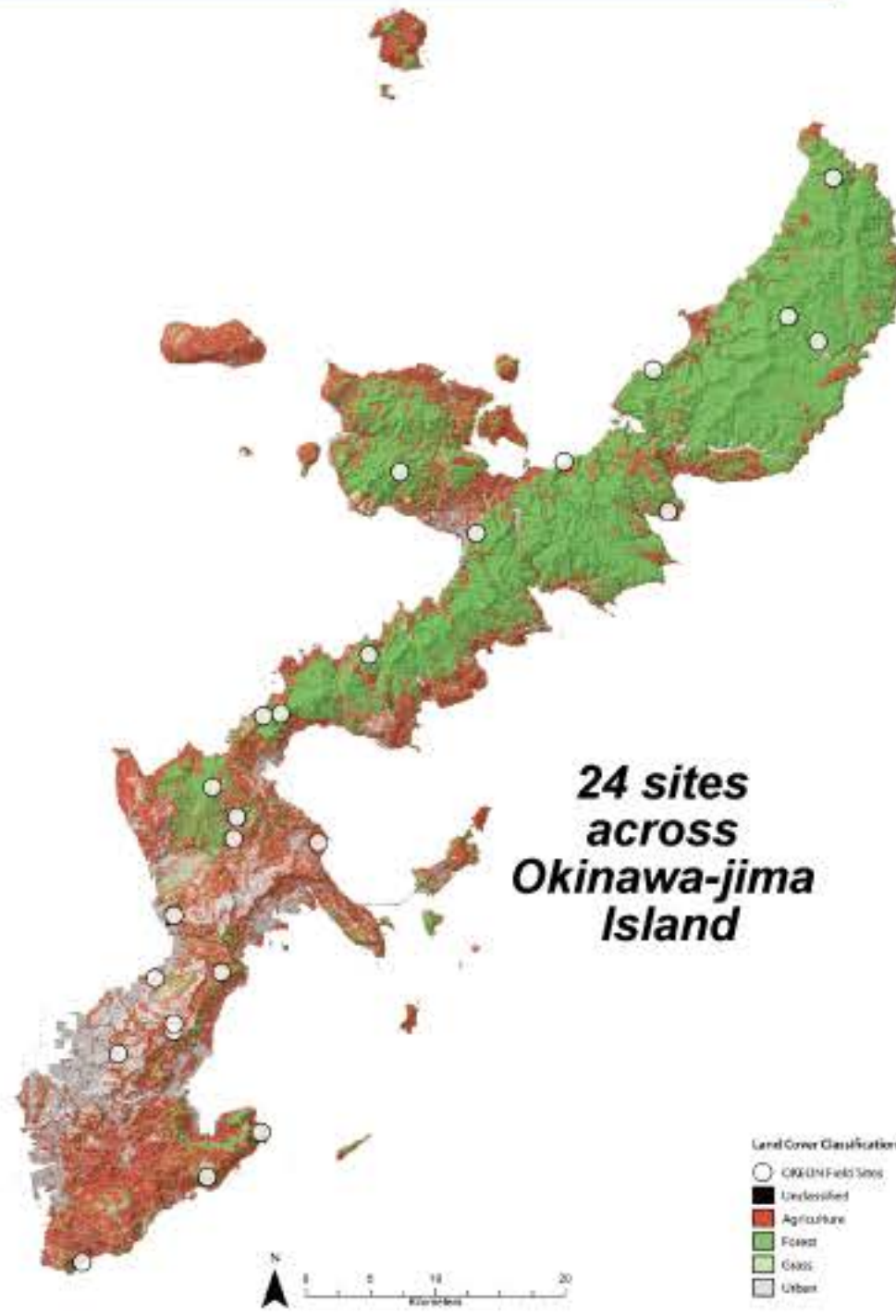
Genomics pipeline



Led by the Mikheyev unit at OIST, we are developing new high-throughput technologies for generating rapid sequence data.

To conduct biodiversity surveys in various environments of Okinawa, we have established 24 sites across the island. We are focusing on Arthropods as the first target, which are known as indicators and drivers of many aspects of ecosystem functioning. The insect sampling has been purposed as training courses for the staffs, which are hired from local community.

Field sampling system



The bottles were collected every two weeks and sorted into order rank in real time. OKEON has accumulated more than 4.8 million insects since 2015.



Insect sampling (SLAM trap)



Weather station



Acoustic device



Video device



OKEON provides guidances and supports for teachers on the ant research projects.



Material collected by students using Time Unit Sampling method is shared with OKEON project.



High School Network



Four Okinawan high schools have conducted their own ant research projects.



Museums are the bridge between OKEON and the Okinawan local society.



Museum Network



Sharing field

OKEON booth in the exhibition of the Okinawa Prefectural Museum were watched by c.a. 12,000 people.



OKEON provides material and data from comprehensive sampling system.



Development of research based on a new collaboration.

Research collaborations



Examples of other collaborations



Sharing the reference collection



Provision of a new content for ecotourism



Collaboration on the invasive species control

Acknowledgments

We would like to acknowledge all supporters for the OKEON Chura-mori Project. Especially, the researches, field samplings, and social networking in this poster could not be developed without the supports of the following people and groups (alphabetical): Hikaru Akamine, Takumi Akasaka, Chatan Town: Board of Education, Kenneth Dudley, Brian Fisher, Nick Friedman, Futenma High School, Hideaki Goto, Narumi Goya, Yoshiaki Hashimoto, Hentona High School, Higashi Museum, Higashi son: Village Office/Educational Center/ Gesaji ward, Tsutomu Hiura, Linda Iha, Takako Ikeda, Hidetoshi Ikeno, Shinji Iriyama, Julia Janicki, Kaiho High School, Shishin Kawamoto, Toshifumi Kimura, Toshihiro Kinjo, Kyuyo High School, Izumi Maehira, Alexander Mikheyev, Akino Miyagi, Mori no ie Minmin, Nago City: City Hall/ Board of Education/ Katsuyama ward, Nago Museum, Nakagusuku Park, Nanjo City: Board of Education/ Kudaken ward, Shigeru Niwa, Masahiro Ohara, Mizue Ohashi, Okinawa City Hall, Okinawa Municipal Museum, Okinawa Prefecture Government, Okinawa Prefectural Museum, Onna Museum, Shah Payal, Masami Shiba, Satoru Kakishima, Southeast Botanical Garden, Masahiro Sueyoshi, Hidetsune Takamine, Atsushi Takashima, Kenji Takehara, Tamagusuku Youth & Children's Center, Yasutaka Tamaki, Jo Ann Tan, Haruki Tatsuta, Kazuki Tsuji, Akira Ueda, Kozue Uekama, Union of Ohyama taro farm, Aina Urano, Uruma City, Yaburaru Discovery Forest, Yomitan High School, and the other Ecomono Unit members, supporters at the OIST. OKEON Chura-mori project is currently funded by the Okinawa Institute of Science and Technology Graduate University